

ART TRANSFORMS

PATRICIA & PHILLIP FROST ART MUSEUM FIU



ANNUAL REPORT
Year in Review 2022-23

FIU | Patricia & Phillip
Frost Art Museum
FLORIDA INTERNATIONAL UNIVERSITY

FROM THE DIRECTOR



Do you remember the bumper sticker that read, “if you can read this you are too close”? If you are reading this newsletter, then you are a cultural consumer. We are part of a growing ecosystem and economy in Miami that generates \$1.43 billion in economic impact with more than 16 million people attending cultural events in Miami-Dade County annually. Each year, the Patricia & Phillip Frost Art Museum FIU learns new ways to connect with cultural consumers—novice and experienced—to stay relevant in the community and leverage its presence as a recognized hub of creative activity.

As I look back on this year, I have seen dramatic increases in our visitor numbers, membership, and social media followers. Donors increasingly demonstrate confidence in our mission by gifting us works of art passionately collected over the years. In turn, we have honored these donors by featuring these works in recent exhibitions such as [*Lalla Essaydi: Image and Text*](#) and [*Seeking Knowledge: Art from Puerto Rico and the Diaspora gifted by Dr. Gamaliel R. Herrera*](#). Our diverse and dynamic exhibition program has, in turn, generated an increased number of visitors, including 12,000 FIU students who come with their classes, groups of friends, or in search of a solitary, meditative experience.

STEAMworks, the Frost’s innovative teaching program in our public schools, has spread to new schools that seek STEAM designation to prepare all students in science, technology, engineering, art, and mathematics. We have

greeted more than 7,500 K-12 students whose exposure to museums, galleries, and the art profession may well begin at this museum. In fact, that’s our operating assumption. In partnership with FIU’s Herbert Wertheim College of Medicine, the Frost has launched an ambitious program to marry the art of looking with the medical arts. One student pronounced their experience in this program as “life changing.” We remain committed to this student and others who see art as offering access to a new language of empathy and wellbeing.

Each year, new collaborative opportunities arise for innovative expression among the arts. This year I have had the distinct pleasure of experiencing dancers, musicians, singers, and poets performing in our galleries, moved by inspirational art, human emotions, and compelling ideas that resonate in our welcoming space. A site-specific hyperreal mural [*The Golden Lining*](#) now greets visitors on our second floor, thanks to Tratos, the creative team of Juan Travieso and Katerina Santos. This vibrant work depicts flora and fauna (including an extraordinary Florida panther) that have been deeply affected by environmental changes in our region.

If you have read this to the end, then you are not too close. In fact, come closer! Stay engaged and mark your calendars for October 7th when we open our Fall 2023 exhibition season along with a robust slate of events and programs. As always, if you like what we are doing, consider making a gift of membership or honoring someone with a donation. Help support our mission to provide free access to arts experiences.

**Warm regards,
Jordana Pomeroy, PhD**



A FROST YEAR IN PHOTOS



EXHIBITIONS

The Frost Art Museum's exhibition program is supported by its museum members. The museum receives ongoing support from the Miami-Dade County Department of Cultural Affairs and the Cultural Affairs Council, the Miami-Dade County Mayor and Board of County Commissioners, the Department of State, Division of Cultural Affairs, the Florida Council on Arts and Culture and the State of Florida.

First-Year Reading Program Exhibitions

In 2016, the museum launched an initiative with the Common Reading Program to attract new students to the museum. All incoming students entering FIU read the same book and discuss it in their First-Year Experience course. The museum developed an exhibition to complement the book with visual literacy, and introduce students to the museum.

MLK Exhibitions

For several years, the museum has developed an exhibition in the winter to coincide with the university's MLK Commemorative Celebration. In 2016, the museum defined the scope and goal of the exhibition, and established it formally as an exhibition series. The Martin Luther King, Jr. Exhibition series addresses issues of race, diversity, social justice, civil rights and humanity to serve as a catalyst for dialogue and enrich our community with new perspectives.

Student Exhibitions

Annually, we host the Master of Art Education and Master of Fine Arts exhibitions.

Tesoro: Pepe Mar's Love Letter to the Frost **December 2, 2020 – November 6, 2022**

In *Tesoro*, Pepe Mar—an artist who marries a broad range of visual references and personal obsessions spanning art, fashion, queer history, and Mexican culture—has created an installation drawn from the Frost Art Museum's collection. Mar envisions the museum's permanent collection of art from Africa, the Americas, Asia, Australia, and Europe, as special treasures and presents them as gifts to the public.

Seeking Knowledge: Art from Puerto Rico and the Diaspora **gifted by Gamaliel R. Herrera**

June 11, 2022 - September 11, 2022

Drawn from Gamaliel R. Herrera's robust donation of Puerto Rican art to the Frost Art Museum, *Seeking Knowledge* is both a celebration and a close look into modern and contemporary art from pioneer artists like Noemi Ruiz and emerging artists like Myritz Castillo. Works on display include abstract paintings, ink drawings, video installations, and sculpture.





Photography by Oriol Tarridas.

Rafael Soldi: a body in transit

August 20, 2022 – December 4, 2022

Part of the First Year Experience exhibition program, this solo show includes works from three interconnected series by Peruvian American artist Rafael Soldi. Exploring issues of identity and memory, Soldi creates portraits that are introspective and vulnerable, where subjects are frequently shown with their eyes closed. Soldi draws from his experience as a queer man growing up in a predominantly Catholic community.

Rembrandt Reframed: Charles Humes, Jr., Jennifer Printz, and Wanda Raimundi-Ortiz

September 15, 2022 – January 8, 2022

From the collection of the Georgia Museum of Art, this exhibition features 22 prints by renown printmaker Rembrandt van Rijn. The prints presented in *Rembrandt Reframed* speak to the enduring interest in the artist's career. Shown alongside Rembrandt's prints, work by Charles Humes, Jr., Jennifer Printz, and Wanda Raimundi-Ortiz challenge us to consider the ways in which they share approaches but also depart dramatically in technique and concept from the Old Master.

In the Mind's Eye: Landscapes of Cuba

September 24, 2022 – January 15, 2023

In the Mind's Eye positions the genre of landscape painting as a powerful tool for dissecting relations between Cuba and the United States. Featuring historical work made between 1850 and 1910, this exhibition presents various modes of representation ranging from idyllic to pointedly nationalistic. Contemporary interventions by Cuban identifying artists speak to the tropes present in the historic depictions of landscape. This exhibition and catalogue are made possible by the Terra Foundation for American Art. Additional generous support for the exhibition is provided by Ramón and Nercys Cernuda and the Shadravan Family, the Gazitua family, ArtesMiami and Aida Levitan, Ph.D., and Miriam and Rick Machado.

Reflections: Master's of Arts Education

December 10, 2022 – January 8, 2023

This is the 14th annual Master's of Art Education exhibition. The 2022 graduating class is comprised of Jocelyn Arismendi, Christopher Ventura, and Grace Villalobos. Together, the works on view explore family history, challenge cultural identity, and illustrate poignant literary references.



Together/Apart

Modern and Contemporary Art from the United States

January 19, 2023 – February 2, 2025

A collaboration with FIU sister museum The Wolfsonian-FIU, *Together/Apart* creates a narrative of modern and contemporary U.S. art that highlights the unique character of both museum collections. Including objects that reflect on urban and political transformations in the United States from the Wolfsonian and art works by immigrant artists from the Frost, *Together/Apart* tackles issues of American identity in a way that is nuanced and thought-provoking. This exhibition was made possible by the Terra Foundation for American Art.

Chitra Ganesh: Dreaming in Multiverse

January 21, 2023 – April 16th, 2023

Chitra Ganesh draws on Buddhist and Hindu iconography, science fiction, queer theory, comics, Surrealism, Bollywood posters, and video games, to inform her illustrations and drawings. Curated by Meredith Malone, Ph.D. from the Kemper Art Museum, this iteration includes a site-specific mural, *Vitruvian Sky*, that combines collage elements with drawing to create a larger-than-life presentation of Ganesh's colorful, dream-like images. This exhibition is supported by the Jane Hsiao Endowment.

An Elegy to Rosewood

January 25, 2023 – April 30, 2023

One hundred years after the Rosewood Massacre, this exhibition honors the survivors of the racially motivated, violent displacement of the Rosewood community. Featuring family heirlooms and artifacts belonging to the private collection of Rosewood descendent Lizzie Robinson Jenkins, this exhibition focuses on the role women have played in preserving knowledge through oral history. Four Miami-based artists were commissioned to create artists' books in response to the themes present in the exhibition. This exhibition is part of the Martin Luther King, Jr., Exhibition Series. We are grateful to the Knight Foundation for its generous support of this exhibition through a Knight Arts Challenge Grant. Funding was also provided by the Green Family Foundation, a grant from Florida Humanities, and FIU's College of Communication, Architecture + The Arts (CARTA) and African and African Diaspora Studies.

Everything, Earth and Sky: An Exhibition of Haitian Art

February 4, 2023 – May 28, 2023

Everything, Earth and Sky is the first comprehensive look into the Frost Art Museum's Haitian art collection. From depictions of schools, communal plazas, and government buildings to Haiti's fauna and the ever-present ocean, the works selected contain different interpretations of physical space and the use of public places. Loans from contemporary Haitian American artists interpret themes present in the Frost's Haitian collection.

This exhibition has been made possible with generous support from the Green Family Foundation, Island TV, PNC Bank, and Comprehensive Medical Aesthetics.

Mnemosyne's Reverie: Master's of Fine Arts Exhibition

April 29, 2023 – May 28, 2023

This annual exhibition celebrates the achievements of the graduating studio students in the MFA program at Florida International University. The exhibiting artists participate in diverse disciplines and respond to time and space.

COLLECTIONS

This past fiscal year, the Frost acquired 82 new works of art. Three works by Miami-based artists were purchased with funds from the Dorothea and Stephen Green Program Endowment. Gifts of art range from internationally renowned artists who continue to contribute to a complex visual culture landscape in Miami. Alfred Allan Lewis, an important patron of the Frost Art Museum, left several historically significant works to the museum as a part of his bequest, including a painting by Milton Avery and a preparatory drawing by Diego Rivera for his 1940 mural Pan American Unity, marking the first work by the artist to enter the collection.

Thanks to a substantial donation from Donald and Alison Weiss, the museum has acquired photographs from the *Aftermath* series by Joel Meyerowitz, which chronicle lower Manhattan in the months following the attack on the World Trade Center on September 11, 2001.

Works by artists who work in South Florida home enhanced the collection during the last fiscal year. The museum has acquired drawings by Jack Amoroso and a painting by Annette Rawlings, both residents of Coconut Grove as it flourished as an arts community during the 1960s and 1970s. A painting by Asser Saint Val was gifted to the museum by David Castillo and Pepe Mar in honor of its temporary exhibition, *Everything, Earth and Sky: An Exhibition of Haitian Art*.

71

Artwork loans

8

Paintings

5

Public art sculptures conserved

2

Times year major cleaning of sculptures along the Avenue of the Arts

30%

Of the collection has been inventoried

150

Images added to object records

17,000

Edits made to the database



Artist Michele Oka-Doner speaking at the ribbon cutting of her mural *The Third Day*.

ACQUISITIONS

Jack Amoroso
Reading W

Ink, watercolor and pencil on paper, late
20th century
Gift of the artist
SC 2022.13.1

Jack Amoroso
Sitting Man, Dudley

Ink, watercolor and pencil on paper, late
20th century
Gift of the artist
SC 2022.13.2

Jack Amoroso
Woman Reading, Patti

Ink, watercolor and pencil on paper, late
20th century
Gift of the artist
SC 2022.13.3

Jack Amoroso
Woman Sitting, June

Ink on vellum, late 20th century
Gift of the artist
SC 2022.13.4

Jack Amoroso
The Letter, by a Picasso Painting

Ink, watercolor and pencil on paper, late
20th century
Gift of the artist
SC 2022.13.5

Jack Amoroso
Theatre Lights

Ink, watercolor and pencil on paper, late
20th century
Gift of the artist
SC 2022.13.6

Jack Amoroso
Italian Space Heater

Ink and oil pastel on paper, late 20th
century
Gift of the artist
SC 2022.13.7

Jack Amoroso
Movie Making

Ink and pencil on paper, late 20th century
Gift of the artist
SC 2022.13.8

Jack Amoroso
Playing the Organ

Ink, oil pastel and pencil on paper, late 20th
century
Gift of the artist
SC 2022.13.9

Jack Amoroso
Foxy Lady

Ink on paper, late 20th century
Gift of the artist
SC 2022.13.10

Jack Amoroso
The Beach Cabanas

Oil pastel on paper, late 20th century
Gift of the artist
SC 2022.13.11

Jack Amoroso
Patti, Night in Casablanca

Oil pastel on paper, late 20th century
Gift of the artist
SC 2022.13.12

Yanira Collado
Untitled

Textile, house paint, oil pastel and chip
board custom frame, 2020-2021
purchased with funds from the Dorothea
and Stephen Green Program Endowment
FIU 2022.10

Stephen Edlich
Untitled

Cloth and burlap painting, 1964
Gift of Alfred Allan Lewis
FIU 2023.3.19

Mary Frank
Untitled

Slab built, incised and raku-fired
earthenware, late 20th century
Gift of Alfred Allan Lewis
FIU 2023.3.8

Luis Gispert
Flamingo Graveyard

Edition 1/3
C-print mounted on aluminum, 2007
Gift of Liza and Dr. Arturo F. Mosquera, in
Honor of Arturo E. Mosquera
FIU 2022.15.6

Luis Gispert
Dump, Edition 2/3

C-print mounted on aluminum, 2007
Gift of Liza and Dr. Arturo F. Mosquera, in
Honor of Arturo E. Mosquera
FIU 2022.15.7

Ahmed Gomez
Malevich and the Martian
Gouache and 3d paper construction on
Arche paper, 2018
Gift of Liza and Dr. Arturo F. Mosquera, in
Honor of Arturo E. Mosquera
FIU 2022.15.5

Addie Herder
Untitled
Mixed media, collage on paper, 1972
Gift of Alfred Allan Lewis
FIU 2023.3.1

Addie Herder
For Allan
Mixed media, collage on paper, 1974
Gift of Alfred Allan Lewis
FIU 2023.3.2

Addie Herder
Untitled
Mixed media, collage on paper, 1965
Gift of Alfred Allan Lewis
FIU 2023.3.3

Addie Herder
Untitled (Birthday Wishes)
Mixed media, collage on paper, 1978
Gift of Alfred Allan Lewis
FIU 2023.3.4

Addie Herder
Untitled
Mixed media, collage on paper, 1987
Gift of Alfred Allan Lewis
FIU 2023.3.5

Addie Herder
Readings
Mixed media, collage on paper, 1987
Gift of Alfred Allan Lewis
FIU 2023.3.6

Addie Herder
Untitled
Mixed media, collage on paper, 1966
Gift of Alfred Allan Lewis
FIU 2023.3.7

Attributed to Utagawa Hiroshige aka Ando
Hiroshige
Evening Snow in Kanbara, from the "Fifty-
Three Stations of the Tōkaidō" series
(Tokaido Gojusan Tsugi No Uchi)
Oban yoko-e color woodblock, 1833-34
Gift of Alfred Allan Lewis
FIU 2023.3.14

Jacques Martin-Ferrieres
Bridge at Sunset
Oil on canvas, c.1959
Gift of Alfred Allan Lewis
FIU 2023.3.18

Robert McKnight
Little Monuments
Mosaic, 2016
Gift of Liza and Dr. Arturo F. Mosquera, in
Honor of Arturo E. Mosquera
FIU 2022.15.4

Joel Meyerowitz
Winter Garden (#396)
Vintage chromogenic contact print, 2001
Gift from the Collection of Donald and
Alison Weiss
FIU 2022.16.1

Joel Meyerowitz
Hoses Fulton St. (#389)
Vintage chromogenic contact print, 2001
Gift from the Collection of Donald and
Alison Weiss
FIU 2022.16.2

Joel Meyerowitz
*Memorial Service Church St 10/28/2001
(#183)*
Vintage chromogenic contact print, 2001
Gift from the Collection of Donald and
Alison Weiss
FIU 2022.16.3

Joel Meyerowitz
Structure and Federal Bldg. (#547)
Vintage chromogenic contact print, 2002
Gift from the Collection of Donald and
Alison Weiss
FIU 2022.16.4

Joel Meyerowitz
Customs Interior (#373)
Vintage chromogenic contact print, 2001
Gift from the Collection of Donald and
Alison Weiss
FIU 2022.16.5

Joel Meyerowitz
K-9 Being Cared For (#360)
Vintage chromogenic contact print, 2001
Gift from the Collection of Donald and
Alison Weiss
FIU 2022.16.6

Joel Meyerowitz
Entrance to WTC Mall (#355)
Vintage chromogenic contact print, 2001
Gift from the Collection of Donald and
Alison Weiss
FIU 2022.16.7

Joel Meyerowitz
Cranes and Welder's Basket (#352)
Vintage chromogenic contact print, 2001
Gift from the Collection of Donald and
Alison Weiss
FIU 2022.16.8

Joel Meyerowitz
Holiday Decorations, West St. (#346)
Vintage chromogenic contact print, 2001
Gift from the Collection of Donald and
Alison Weiss
FIU 2022.16.9

Joel Meyerowitz
Visitors Lo the Site (#417)
Vintage chromogenic contact print, 2001
Gift from the Collection of Donald and
Alison Weiss
FIU 2022.16.10

Joel Meyerowitz
Welders and Cage West St. (#410)
Vintage chromogenic contact print, 2001
Gift from the Collection of Donald and
Alison Weiss
FIU 2022.16.11

Joel Meyerowitz
Signs on back of crane (#237)
Vintage chromogenic contact print, 2001
Gift from the Collection of Donald and
Alison Weiss
FIU 2022.16.12

Joel Meyerowitz
Donut Shop (#231)
Vintage chromogenic contact print, 2001
Gift from the Collection of Donald and
Alison Weiss
FIU 2022.16.13

Joel Meyerowitz
Corner, Century 21 (#208)
Vintage chromogenic contact print, 2001
Gift from the Collection of Donald and
Alison Weiss
FIU 2022.16.14

Joel Meyerowitz
Truck and Rubble (#473)
Vintage chromogenic contact print, 2002
Gift from the Collection of Donald and
Alison Weiss
FIU 2022.16.15

Joel Meyerowitz
Cross (#544)
Vintage chromogenic contact print, 2002
Gift from the Collection of Donald and
Alison Weiss
FIU 2022.16.16

Joel Meyerowitz
Stuffed Animal in Pit (#542)
Vintage chromogenic contact print, 2002
Gift from the Collection of Donald and
Alison Weiss
FIU 2022.16.17

Joel Meyerowitz <i>Ironworker (#538)</i> Vintage chromogenic contact print, 2002 Gift from the Collection of Donald and Alison Weiss FIU 2022.16.18	Joel Meyerowitz <i>Wounded fireman (#512)</i> Vintage chromogenic contact print, 2001 Gift from the Collection of Donald and Alison Weiss FIU 2023.4.7	Joel Meyerowitz <i>From Customs Bldg. Looking East (#318)</i> Vintage chromogenic contact print, 2002 Gift from the Collection of Donald and Alison Weiss FIU 2023.4.16
Joel Meyerowitz <i>Worker in Basket (#535)</i> Vintage chromogenic contact print, 2002 Gift from the Collection of Donald and Alison Weiss FIU 2022.16.19	Joel Meyerowitz <i>Scaffolding (#501)</i> Vintage hromogenic contact print, 2001 Gift from the Collection of Donald and Alison Weiss FIU 2023.4.8	Joel Meyerowitz <i>Looking South (#573)</i> Vintage chromogenic contact print, 1980 Gift from the Collection of Donald and Alison Weiss FIU 2023.4.17
Joel Meyerowitz <i>Customs Controlled Bldg. Collapse (#342)</i> Vintage chromogenic contact print, 2001 Gift from the Collection of Donald and Alison Weiss FIU 2022.16.20	Joel Meyerowitz <i>Pipers (#500)</i> Vintage chromogenic contact print, 2002 Gift from the Collection of Donald and Alison Weiss FIU 2023.4.9	Joel Meyerowitz <i>Looking South (#595)</i> Vintage chromogenic contact print, 1984 Gift from the Collection of Donald and Alison Weiss FIU 2023.4.18
Joel Meyerowitz <i>Driver (#340)</i> Vintage chromogenic contact print, 2001 Gift from the Collection of Donald and Alison Weiss FIU 2023.4.1	Joel Meyerowitz <i>Inside "Taj Mahal" Tent (#495)</i> Vintage chromogenic contact print, 2002 Gift from the Collection of Donald and Alison Weiss FIU 2023.4.10	Joel Meyerowitz <i>Looking South (#586)</i> Vintage chromogenic contact print, 1980 Gift from the Collection of Donald and Alison Weiss FIU 2023.4.19
Joel Meyerowitz <i>Slurry wall below West St. (#339)</i> Vintage chromogenic contact print, 2001 Gift from the Collection of Donald and Alison Weiss FIU 2023.4.2	Joel Meyerowitz <i>Woman on Street (#491)</i> Vintage chromogenic contact print, 2002 Gift from the Collection of Donald and Alison Weiss FIU 2023.4.11	Joel Meyerowitz <i>North Wall Looking West (#432)</i> Vintage chromogenic contact print, 2001 Gift from the Collection of Donald and Alison Weiss FIU 2023.4.20
Joel Meyerowitz <i>Office (#329)</i> Vintage chromogenic contact print, 2002 Gift from the Collection of Donald and Alison Weiss FIU 2023.4.3	Joel Meyerowitz <i>Guard (#486)</i> Vintage chromogenic contact print, 2002 Gift from the Collection of Donald and Alison Weiss FIU 2023.4.12	Louise Nevelson <i>Untitled</i> Lithograph in black and white, 1963 Gift of Alfred Allan Lewis FIU 2023.3.12
Joel Meyerowitz <i>Twisted steel (#326)</i> Vintage chromogenic contact print, 2002 Gift from the Collection of Donald and Alison Weiss FIU 2023.4.4	Joel Meyerowitz <i>Fire Truck Fres11 Kills (#480)</i> Vintage chromogenic contact print, 2002 Gift from the Collection of Donald and Alison Weiss FIU 2023.4.13	Louise Nevelson <i>Aquatint II</i> Lithograph in color and mixed media, 1973 Gift of Alfred Allan Lewis FIU 2023.3.13
Joel Meyerowitz <i>Office in Chase Bldg. (#321)</i> Vintage chromogenic contact print, 2002 Gift from the Collection of Donald and Alison Weiss FIU 2023.4.5	Joel Meyerowitz <i>The Empty Site, 6.21.02 (#1)</i> Vintage chromogenic contact print, 2002 Gift from the Collection of Donald and Alison Weiss FIU 2023.4.14	Louise Berliawsky Nevelson <i>Symphony Three</i> Black polyester resin sculpture, 1974 Gift of Alfred Allan Lewis FIU 2023.3.15
Joel Meyerowitz <i>George Reilly (Ret. St.) (#48)</i> Vintage chromogenic contact print, 2002 Gift from the Collection of Donald and Alison Weiss FIU 2023.4.6	Joel Meyerowitz <i>Workers from Last Night (#16)</i> Vintage chromogenic contact print, 2002 Gift from the Collection of Donald and Alison Weiss FIU 2023.4.15	Michele Oka-Doner <i>Preparatory Drawing for The Third Day</i> Graphite, marker, and ink on paper, 2018 Courtesy of the Artist FIU 2023.5
		Annette Rawlings <i>Murano</i> Oil on linen, 2004 Gift of F. Hawryliw FIU 2023.2



Man Ray
Untitled
Lithograph in color, mid-twentieth century
Gift of Alfred Allan Lewis
FIU 2023.3.9

Diego Rivera
Untitled
Watercolor and pencil on paper, 1940
Gift of Alfred Allan Lewis
FIU 2023.3.10

Auguste Rodin
Study for Burghers of Calais
Bronze and stone, Late 19th century
Gift of Richard A. Schwartz, Professor Emeritus
FIU 2022.12

Asser Saint-Val
IWL SAETH PNGFOR4K
Mixed media on canvas, two and half years of vacuum dust, 2019
Gift of David Castillo and Pepe Mar
FIU 2023.1

Onajide Shabaka
Toward the sea river flows (sun)
Mixed media on paper, 2017
Purchased with funds from the Dorothea and Stephen Green Program Endowment
FIU 2022.17.1

Onajide Shabaka
Toward the sea river flows (moon)
Mixed media on paper, 2017
Purchased with funds from the Dorothea and Stephen Green Program Endowment
FIU 2022.17.2

Rufino Tamayo
Untitled
Pencil and yellow colored pencil on paper, 1967
Gift of Alfred Allan Lewis
FIU 2023.3.11

Angela Valella
The Right to Opacity
Afterimage 1:11, 10
Inkjet print on crystal clear paper, 2018
Gift of Liza and Dr. Arturo F. Mosquera, in Honor of Arturo E. Mosquera
FIU 2022.15.2

Juan Vallejo
Untitled
Mixed media, late twentieth century
Gift of Richard Levine
FIU 2022.14

Angela Valella
The Right to Opacity
Afterimage 1:11, 12
Inkjet print on crystal clear paper, 2018
Gift of Liza and Dr. Arturo F. Mosquera, in Honor of Arturo E. Mosquera
FIU 2022.15.3

Pedro Vizcaino
Tank
Acrylic, styrofoam, color pencil on cardboard, 2005
Gift of Liza and Dr. Arturo F. Mosquera, in Honor of Arturo E. Mosquera
FIU 2022.15.1

Antoine Vollon
Untitled
Oil on canvas, late 19th century
Gift of Alfred Allan Lewis
FIU 2023.3.17

Francisco Zuñiga
Dos Mujeres en Pie (Two Women on Foot)
Bronze, 1965
Gift of Alfred Allan Lewis
FIU 2023.3.16



Artist Mark Delmont in conversation with museum visitors.

ENGAGING CAMPUS + COMMUNITY

FACULTY

FIU Herbert Wertheim College of Medicine

Over five years, Frost has worked closely with the faculty from the Honors College in courses connecting the arts and humanities in medicine and global learning programs to introduce students to close-looking. This research-based strategy increases their observational skills.

The program's engagement continues and has led to the development of a micro-credential with Dr. Frank Anderson, M.P.H. Professor, Department Chair, Humanities, Health, and Society, along with Dr. Amilcar Castellano, Associate Professor. The Frost team worked with several groups supported by a FRAHME (Fundamental Role of Arts and Humanities in Medical Education) grant. The cohorts visited the museum, participated in close-looking exercises, created art, and wrote reflections on their experience developing a diagnostic eye. The grant culminated with an art show displaying their artistic and writing skills during a closing reception with medical faculty and professors in attendance on the main campus.

Based on the success of this collaborative program, a new micro-credential will be submitted for approval to be available in the fall. This badge will provide 12 hours to learn anatomical drawing through observation in the galleries led by Professor David Chang.



Professor David Chang leading drawing workshop for museum visitors.



Professor Dr. Kalai Matheewith posing with FIU students.

FIU STUDENTS

Open Mic Nights are scheduled four times per year and attract students to the Frost, many of whom have never visited the museum. More than 116 students attended our most recent open mic experiences.

Aspiring poets, musicians, and singers performed original and popular works for their peers. This program has continued to offer a space where FIU students feel safe and can highlight their talents.

Zine Workshops support faculty from many different departments and enrolled students throughout the academic year. Students and faculty create zines (small artistic publications) in response to film, lecture or reading assignments while connecting them to course objectives. We organize several workshops per year for FIU courses and additionally many more for the community.



Performer participating in Open Mic Night.

COMMUNITY

Creative Aging Art Making Workshops

Senior residential housing activity directors are invited through a collaboration with Susan O. Holtzman, Older Adult and Special Needs Advocate, Division of Innovation and Performance, Office of Mayor Daniella Levine Cava. These visitors tour the galleries once a month and then create a work of art.

Slow Art Day: The Art of Looking and Loving Art

10th Anniversary with ASL Interpretation | Supported by the Venero Endowment

Every April we host Slow Art Day, a global movement that asks participants to live in the moment and discover for themselves the joys of looking at art slowly. Frost's unique inclusive programs intend to meet every audience's needs, including addressing the social-emotional learner needs that surfaced post-pandemic. American Sign Language interpreters were hired to support our Deaf community for multiple events such as this one as well as family days, lectures, and panel discussions.

Frost Family Days

The Frost organizes 4 family days per year aligning with Hispanic Heritage and current exhibitions inviting the community for a day of reconnecting fun.

Community Artist Workshops

Inspired by our exhibition *From the Andes to the Caribbean: Art of the Spanish Americas from the Thoma Collection*, we kicked off summer programming by facilitating a weaving workshop with Miami-based artist and FIU Professor, Liene Bosque. We partnered with renowned artist and FIU Professor, David Y. Chang and Miami-based artist, Wendy Ordonez to lead a two-part plein air watercolor workshop that brought more than 215 participants to the museum.

Tertulia Nights is an after-hours experience that takes place every second Thursday of the month. This program promotes an exchange of ideas and dynamic modes of creation. It amplifies new voices, inviting local artists, scholars, and changemakers interested in engaging with the community innovatively. Since September of 2022, seven South Florida-based artists have led workshops and presentations that have driven diverse audiences into our museum. We have welcomed multiple well-known and emerging local artists throughout the year exploring new and innovative ways to connect to the community through artmaking.

Drawing You In combines a drawing session and an exhibition tour, providing participants with an immersive experience that invites everyone to observe details, learn, and bring out their inner artist through drawing. These monthly sessions welcome teachers seeking recertification points.

Community Partners

MoCA Teen Art Force

Roxy Theatre Group

Smithsonian Institution/Emerson Collective

Crealdé School of Art/Hannibal Square Heritage Center

Beloit College/The Wright Museum of Art

Miami-Dade County Public Schools

Sweetwater Elementary School

Dr. Carlos J. Finlay Elementary School

Booker T. Washington Senior High School

Arthur & Polly Mays 6-12 Conservatory of the Arts

Fit Kids for America

Miami Arts Studio 6-12 @ Zelda Glazer Middle School

Educa Vision

Florida Grand Opera

Blue Lagoon Residential House

FIU MLK Commemorative Committee

FIU Juneteenth Celebration

FIU Pride Center

Casa Cuba FIU

Cuban Research Institute

Kimberly Green Latin American & Caribbean Center

African and African Diaspora Studies Program

Center for Women's and Gender Studies

Department of Modern Languages

Le Cercle Français & Pi Delta Phi

Herbert Wertheim College of Medicine

Medical Humanities Club

Global Learning Program

Dual Enrollment

Department of Art and Art History

Master of Art Education Program

Department of History

First-Year Experience Program

Herbert & Nicole Wertheim School of Music

The Humanities Edge

Honors College



Sweetwater Elementary School students showcase their work in the Frost Art Museum FIU.

K-12 OUTREACH

Inside the Artist's Studio, focuses on high school students' artistic career pathways by bringing students to local art studios. This initiative is in collaboration with Miami Dade County School Visual Arts Program.

Schools in the program:

- Miami Arts Studio at Zelda Glazer
- Arthur and Polly Mays Conservatory of the Arts
- Design and Architecture High School (DASH)
- G. Holmes Braddock
- Miami Beach Senior High
- Booker T. Washington School

School Art Shows at the Frost

The Frost Art Museum hosted two shows of student artwork for the first time, the small works show titled *Whaddaya know it's Rococo!* showcased student work from Miami Dade County Public Schools from over 37 schools.

Power of Art Museum Showcase May 24, 2023 - June 6, 2023

Sweetwater Elementary School showcased student work created over the academic year. The Frost reception welcomed over 200 visitors to view the school's student art created by second, third, fourth, and fifth graders. This program is in its eighth year.

Frost Education Team

Frost Educators were invited to jury student art exhibitions organized by the Miami-Dade County Public Schools Scholastic, Scholastic FAEA (Florida Art Education Association), the K-12 Mario Diaz-Balart Congressional Student Art Competition, and Congressman Gimenez.

"THE FROST ART MUSEUM'S PARTNERSHIP WITH SWEETWATER ELEMENTARY PROVIDES OUR STUDENTS WITH A UNIQUE EDUCATIONAL EXPERIENCE.

OUR STUDENTS ACCESS LEARNING THROUGH VISUAL ART EXPERIENCES BOTH IN SCHOOL AND ON SITE AT THE FROST ART MUSEUM.

SWEETWATER ELEMENTARY'S COMMUNITY COMPRISED OF STUDENTS LIVING BELOW THE POVERTY LEVEL AND ENGLISH LANGUAGE LEARNERS WHO WOULD NOT HAVE THE MEANS TO ACCESS THIS TYPE OF CURRICULAR EXPERIENCE WITHOUT THE GENEROSITY OF THE FROST'S PROGRAMMING."

Janet P. Olivera
Principal, Sweetwater Elementary School

Art Kits

The Frost Art Museum continues to distribute art materials to schools and their students.

Teacher Workshops (year-round)

School bus transportation is raffled by the Frost and MDCPS to teachers who attend workshops as an incentive to organize field trip for students and advocate for art integration. The Frost seeks to support educators in the community, and in their classrooms supporting art teachers and other subjects such as math, social science and art history. Thirty elementary school art teachers from 50 schools participated.

Summer Teacher Workshops The Art of Gratitude July 2022

Every summer Frost partners with MDCPS offer a variety of professional workshops for teachers. The Frost partners with FIU faculty and with local artists to develop specially designed workshops that support classroom teaching. This year one two-week workshops turned to the Self and focused on ways to use art to help the educator, who in turn will apply the techniques to help the students in the fall.

Teacher Resources have been re-designed with a focus group to provide much needed support to the many educators struggling with the changes in the school classroom. The resources will be uploaded to the museum website in addition to website updates.

Smithsonian Museum Day

This Smithsonian day welcomed over 200 visitors and participants became Art Detectives, going on a scavenger hunt across the galleries.

Summer Camps

The summer months brought hundreds of young campers to our galleries from across the city. Many previous summer camp groups returned such as Fit Kids America, Mindful Kids, FIU Theatre Camp, Lewis Studio Arts 4Learning, and the Barnyard. Students visited our permanent collection exhibition, *Tesoro*, and engaged in tours with inquiry questions, close-looking and visual thinking exercises.

THANK YOU ALL FOR THE INCREDIBLE OPPORTUNITIES THAT YOU GIVE THE MAGNET ART KIDS. IT MEANS THE WORLD TO THEM TO BE ABLE TO HAVE THESE EXPERIENCES THAT ENRICH THEIR ARTISTIC EDUCATION AND INSPIRE THEM TO BECOME EVEN BETTER ARTISTS! WE OWE YOU ALL A DEBT OF GRATITUDE!

Brian Reedy, Art Teacher
MAS @ Zelda Glazer

Sweetwater Elementary School students showcase their work in the Frost Art Museum FIU.



S.T.E.A.M. WORKS!

The STEAMworks program is an approach to learning that uses Science, Technology, Engineering, the Arts and Mathematics as access points for guiding student inquiry, dialogue, and critical thinking. This unique Frost program continues to provide support to schools seeking STEAM designation. The seven schools participating in STEAMworks engaged with the Frost exhibitions and collections virtually and in person.

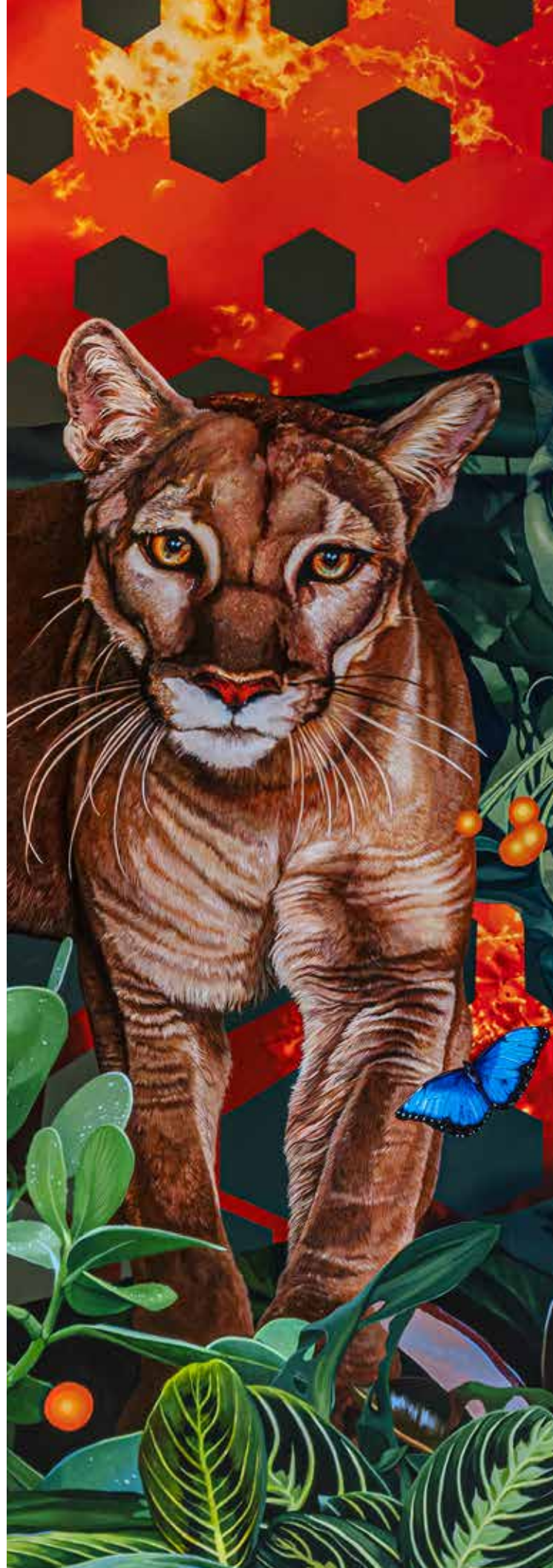
The Golden Lining Mural, TRATOS a new program with Sweetwater Elementary School Students. The newly installed mural by the artist Tratos, has provided a new STEAM connection, combining art history, environmental science, sustainability especially aligned to Florida's fourth grade social studies curriculum.

Community Service / Mentorship

The Frost team partners with Miami Arts Studio @ Zelda Glazer, also an FIU affiliated partner. We recruited over 25 students during the school's volunteer fair to create a new teen gallery guide cohort. This group of students volunteer throughout the year and over the summer while learning about professional careers in museums. The program has grown and will expand to include a mentorship program with education.

"STEAMWORKS HAS INSPIRED ME AND MY STUDENTS. I WAS EVALUATED THIS YEAR AND WAS CHOSEN TO BE A MODEL CLASSROOM FOR STEAM RECEIVING A 5.0 - THE HIGHEST SCORE."

Carmen Company, Art Teacher
South Miami Middle School



PROFESSIONAL DEVELOPMENT OPPORTUNITIES FOR STUDENTS

Rubin-Ladd Internships

Supported annually by the Rubin Ladd Foundation, NY

The Rubin-Ladd internships at the Frost Art Museum are for two junior or senior FIU students each fall semester. Students are trained to teach with objects to expand the museum's audience reach. During the course of this internship, students gain experience working in museums and developing transferable skills in critical thinking, visual analysis, public speaking, educational theory, and community engagement.

- Two FIU students last year became the second cohort of paid interns.
- The internship continues into its third year with two students each fall who continue through spring. The students will teach with the Frost collections and traveling exhibitions on-site and at schools across the county.

The Ziff Internships for Curatorial Diversity (Endowed)

This endowed internship is offered to a junior or senior student at FIU who wishes to embark on a career in the curatorial field. Our intention is to hire a student who identifies as a person of color, but we are an equal opportunity employer, and all qualifying students are welcome to apply. This internship aims to increase the diversity of the curatorial field, helping to build the next generation of art museum professionals.

Emerson Collective Youth Collaborative Leadership for Change (Smithsonian)

The Smithsonian, in collaboration with the Emerson Collective Youth Collaborative and the George Washington University, offers the Leadership for Change Internship to rising college sophomores, juniors, and seniors who are committed to helping communities, are passionate about social justice, and are driven to accelerate positive impact in our world. This is the third summer the Frost has hosted Smithsonian interns.

The **Humanities Edge** program helps college students in the humanities transition from Miami Dade College to Florida International University. Their goal is to provide opportunities for students to gain valuable professional experiences and skills and receive a stipend for their work. The Frost partners with Humanities Edge, providing meaningful internship experiences to students throughout the year in different areas of museum operations.



High School Interns Sandra Mangano and Christian Loor.

I JUST WANTED TO SAY THANK YOU TO EVERYONE. WORDS CAN'T DESCRIBE HOW GRATEFUL I AM FOR THIS EXPERIENCE. THANK YOU ALL FOR THE SUPPORT AND KINDNESS YOU HAVE SHOWN ME THROUGHOUT MY INTERNSHIP. I WILL CONTINUE VISITING AND SUPPORTING THE MUSEUM IN ALL POSSIBLE WAYS! AGAIN, THANK YOU SO MUCH FOR EVERYTHING.

Gisselle Mestre Delgado '24
Humanities Edge Intern, Spring/Summer 2023



MUSEUM RECOGNITION + PRESS

The goal of the Frost Art Museum's public relations and marketing initiatives remains consistent within all its exhibitions, events, and programming; that goal is to maximize the museum's visibility while engaging visitors and prospectives. As the museum expanded its PR and marketing team late in the year, increased efforts have been made to meet its needs.

Increasing visibility through media relations and organic media opportunities was a top priority for the museum in 2022-23, and in the last quarter of the year, the Frost was featured in top-tier local and national publications. Media placements secured in the fiscal year all prominently include the Frost and its exhibitions among some of the most powerful, influential, and inclusionary museums and shows across the globe.

Engaging new and existing audiences using social media continues to remain a focus for the Frost Art Museum. Through sharing well-designed graphics and images, resharing user-generated content, and boosting posts related to RSVP-driven events, the museum captured the attention of audiences it may not have otherwise. These efforts resulted in increased clicks to event RSVP-pages, the most liked [Instagram post](#) on the Frost's profile to date (270), and our profile surpassing 9,000 followers.

The Frost Art Museum's newsletter subscriber list has 18,500 subscribers. The museum has grown its platform to share news and updates directly to visitors' inboxes. The team has curated engaging content to feature in each week's newsletter, including event recaps, intern spotlights, exhibition features, and more. The newsletter has garnered attention from the museum's corporate sponsors as well.

Advertising campaigns remained strong for exhibitions this year. Outside ad partners include WLRN, Miami Herald, and Mami New Times. Additionally, the museum has a full-page feature booked in the upcoming FIU Orientation Guide for incoming students. Increasing the search engine optimization of the museum is a growing priority, as digital presence is increasingly important in bolstering online visibility. To capitalize on the relationship with the Miami Herald, the Frost Art Museum is currently undergoing a new search engine marketing campaign with the publication using its Google Analytics expertise to better enhance the museum's SEO.

- In conjunction with the Martin Luther King Jr. Exhibition Series, *An Elegy to Rosewood* launched with a panel discussion featuring Lizzie Robinson Jenkins, the descendent of a Rosewood massacre survivor and founder of the Real Rosewood Foundation. This panel drew media interest and was prominently featured on the front page of the Friday/Saturday edition of the Miami Herald.

- *Chitra Ganesh: Dreaming in Multiverse* draws upon the artist's inspirations of comic books, video games, Surrealism, Bollywood posters, and queer theory. The exhibition received international attention from NBC News along with local coverage in South Florida PBS's Art Loft program, which focuses on highlighting South Florida's bustling art scene.

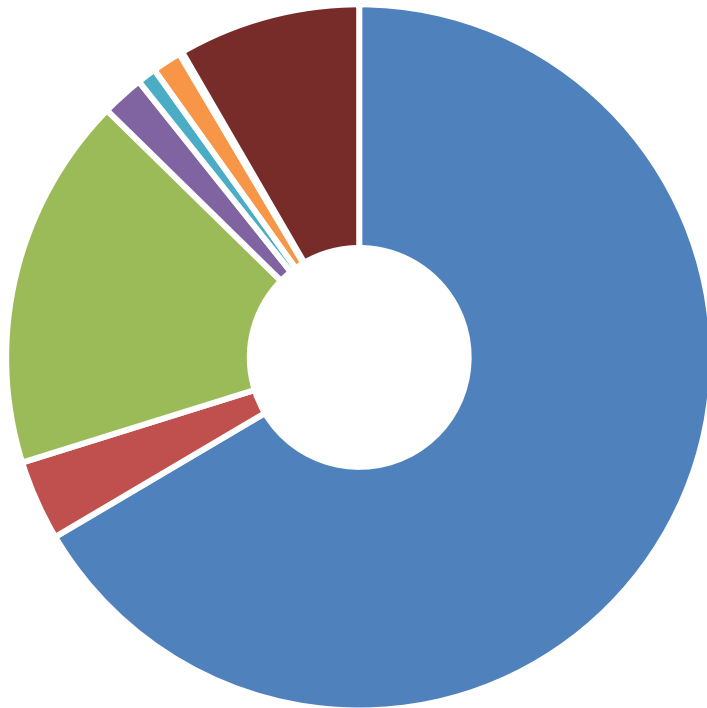
- Our exhibitions *An Elegy to Rosewood* and *Everything, Earth and Sky: An Exhibition of Haitian Art* were featured in The Miami Times, published by South Florida's leading Black-owned media company.



Artist Chitra Ganesh in a interview with Art Loft.

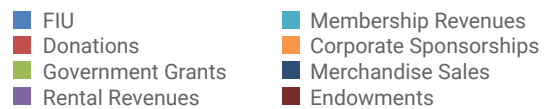
STATEMENT OF OPERATIONS

REVENUE

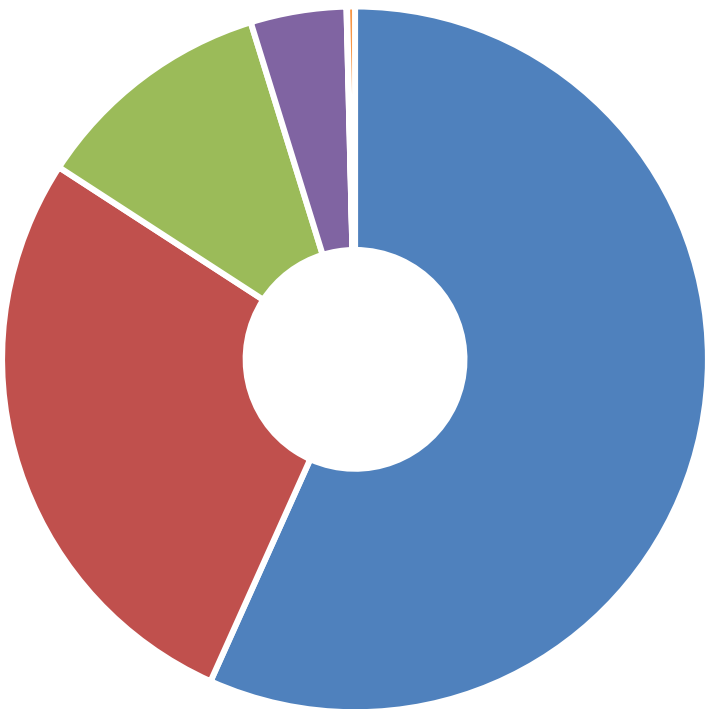


FIU	\$ 1,690,105.00
Donations	\$ 93,445.25
Government Grants	\$ 435,758.00
Rental Revenues	\$ 49,266.00
Membership Revenues	\$ 22,286.40
Corporate Sponsorships	\$ 34,020.00
Merchandise Sales	\$ 3,777.00
Endowments	\$ 212,500.21

Total Revenues **\$ 2,541,157.86**



EXPENSES

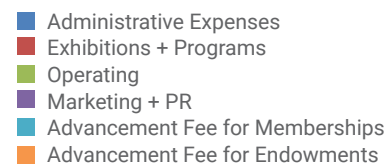


Administrative Expenses	\$1,441,190.58
Exhibitions + Programs	\$697,449.85
Operating	\$281,124.18
Marketing + PR	\$111,546.29

Advancement Fee for Memberships \$668.59

Advancement Fee for Donations & Endowments \$9,178.36

Total Expenses **\$2,541,157.86**



MUSEUM MEMBERS

Lifetime Members

Patricia and Phillip Frost
Ideal Gladstone
Betty Laird Perry

Benefactor

Katherine Caskey
Domitila Fox and Jeffrey
Horstmyer
Cookie and Ralph Gazitua
Daniel Gelfman
Marilyn and Steven Greene
Jane Hurt
Deborah Korge
Robert Lewis
Miriam and Ricardo Machado
Adriana Malfitano
Rodrigo Nieto-Galvis
Daniel Perron and Jonathan Hogg
Jordana Pomeroy
Linda and Irwin Potash
Gerardo Rodriguez
Karen Vassell
Jacquelyne Velken
Douglas Wartzok

Contributor

Art Basel Miami Beach
Greater Miami Convention &
Visitor Bureau
Valerie Cabrera Brugal
Amy Galpin
Sandi-Jo Gordon
Stefanie Reed
Mark Rogers
Elizabeth Rogers

Supporters

Sydney Cappel
Kathleen Corcoran
Arturo Mosquera

Individual

Emily Afre
Esteban Asencio
Carmen Carpio
Rosemarie Chiarlone
Tanya Desdunes
Grace Frawley
Mandayam Thirunarayanan
Frantz Williams

Senior

Frances Aronovitz
Kip Irvine
Mark Gordon
Peter Lunder
John Munson
Henry Stolar

FIU Faculty, Staff and Alumni

Deborah Alley
Maria Ayub
Christian Bonet
Jeannette Cruz
Amaris Cruz Guerrero
Paola Duran
JeanCarlos Fernandez
Miguel Germain
Gonzalo Goicochea
Ana Guerra
Silvia La Villa
Marla Mitjans
Mabel Morales
Lourdes Ranero
Yady Rivero
Luis Tabares
Diego Waisman
Daniel Zayas

Museum Insiders


Andrew Acevedo
Karamot Adeola
Gopi Krishna Adusumalli
Fatema Al Sakiti
Inchara Alaghatta
Gabriel Alarcon
Amal Albaladejo
Sophia Alexander
Jonathan Alexis
Sabrina Alfonso
Marisol Alfonso
Rebeca Alonso
Victor Alvarado
Emmanuel Alvarez
Derrick Amoah
Conor Andrich
Alerion Angelin
Anissa Angol
Lucas Arabi
Olivian Aradanas
Sasha Arcia
Janis Argeswara
Angel Armesto

Alejandra Arrazcaeta
Alis Arvelo
Carlos Ascurra
Talia Aslani
Nailah Augustin
Alexa Baez Ramos
Jaime Balladares
Jean Bastien
Venus Becar
Dalia Berlin
Natalie Berry
Ruth Blanc
Gabriela Bombino
Saray Briones
Gaelle Bruno
Madison Bunsen
Michelle Butler
Cree Butler
Paloma Buzzi
Vivian Caballero
Leah Caceres
Victoria Calveira
Daniela Canizares
Isabella Canizares
Aileen Carmona
Gabriela Caro
Estefany Carvajal
Anabela Castano
Camila Castillo
Angeliky Castellon
Valerie Catalan
Angela Chaine
Sri Sai Teja Chanthati
Simon Miguel Chertman
Isabella Chiang
Luna Chimerakis
Delano Cicconi
John Colon
Itxenia Cortez
Manuel Cortina
Elie Daniel
Liam De Armas
Karla De Armas Ledesma
Georgia De Loza
Alondra Delgado
Lidia Delgado
Gabrielle Demosthene
Kayla Dennis
Amanda Di Perna
Nathalia Dias Regiani
Milena Diaz

Kenia Dolmuz
Milena Dupuis
Ryan Duran
Kelin Escobar
Danny Fernandez
Adaleen Ferreiro
Monica Ferrer
Jessica Finol
Chris First
Mateo Fischer
Andrea Flores Sanchez
Maria Forero
Daniela Fuenmayor
Elizabeth Galarcep
Emily Galvez
Francisco Gamez
Alan Garces
Joel Garces
Franco Batista Garcia
Amanda Garcia
Javier García
Folasade Goddard
Samantha Gomez
Sabrina Gomez
Camila Gomez Canel
Nicholas Gonzalez
Benjamin Gouk
Sofia Gragirena
Yaa Graham
Raheim Grant
Liza Guanch
Stefany Guerra
Valeria Guevara
Kayla Gutierrez
Kylie Hannigan
Rachel Hansell
Bjorn Hare
Darryl Hawes
Robert Hazard
Carlos Hernandez
Sofia Hernandez
Jadelyn Hernandez
Christopher Hernandez
Merly Herrera
Sofia Hidalgo
Adriaan Jansen
Brenda Diaz Jimenez
Francisco Jimenez
Sofia Jones
Rhianohn Kelly
Andrew Kerzer
Zeshan Khatri
Amarilis Latchman
Alejandra Lavado
Stephanie Leiva
Flavia Leon
Lidia Llompant
Katia Lobo
Arianna Lopez
Angelica Teresa Lugo

Myeisha Lumpkin
Alexandria Macht
Michelle Maloney
David Mar
Rachel Marnell
Michelle Marrero
Philnequa Marriott
Joseph Martinez
Isabel Martinez
Jasmine McCobb-Pratt
Maria Medina
Ana Mendez
Yvenord Mergilles
Azul Meza
Omair Mirza
Christopher Montejo
Anginie Moreno
Hannah Moussa
Vincent Nastasi
Zoe Nikirk
L'nique Noel
Kathleen Obrer
Angie Olivera-Sosa
Marco Ordonez
Solamia Ortiz
Tyler Oviedo
Jordan Pabon
Kyle Trisha Parago
Abner Perez
Yelany Perez
Raquel Pico
Sofia Pierce
Sydni Punausuia
Julie Quesada
Felix Ramirez
Daniella Ramos
Jenny Reyes
Marcha Riche
Danise Riche
Harlan Rifkind
Emilser Rivas
Jennifer Rivas
Andrea Rivera
Isabel Rivera
Juan Rivera
Joseph Rodrigues
Nicole Rodriguez
Kenneth Rodriguez
Karina Rodriguez
Katherine Rodriguez
Anjelika Rodriguez
Isabel Romer
Gabriel Rondon
Luciana Ruggiero
Juana Saavedra
Daffodyle Saget
Alondra Samayoa
Makaylah Sampson
Alessandra Sanchez
Obed Sanchez

Paola Andrea Sanchez-Castaneda
Andrea Sandoval
Patricia Santana
Sophia Santana
Andrea Santiago
Richard Sardina
Ashfaq Ali Shafin
Nathan Smith
Jahnee Smith
Natalie Soto
Julian Soto
Kerly Soto
Yasmin Souto
Joaquin Stacey
Geraldine Sternfeld
Andrea Suarez
Marcelle Suarez
Maxwell Suárez
Danny Tarrau
Valentina Timothee
Audrey Torres
Rosemary Toval
Amanda Treto
Michel Trombetta Pena
Natalia Trovato
Melina Tsalikis
Gabriel Urena
Annette Valdes
Flavia Valencia
Libni Valera
Diana Vazquez
Lucas Vieira
Nicole Villa
Carolina Villagra
Paula Fleites Villasol
Giovanna Violi
Lauren Walker
Madison Watson
Chaniya Wilson
Maya Wilson-Fernandez
Amanda Wojtasiak
Leyla Yatim
Angelique Young
Tian Yu
Adria Zenkell



Detail of *The Third Day* a mural by Michele Oka-Doner.

LIST OF DONORS

The museum is grateful to the many community members, students, faculty, friends, foundations, and others who support us through gifts, memberships, and grants. The following includes gifts received between July 1, 2022, and June 30, 2023. Every effort has been made to ensure accuracy.

\$100,000+

Miami-Dade County Department of Cultural Affairs
Major Cultural Institutions
State of Florida Division of Arts & Culture

\$25,000-99,999

Terra Foundation for American Art

\$10,000-\$24,999

Art Bridges Inc.
Baptist Health South Florida
Jeanne Donovan Fisher
Florida Humanities Council
The Rubin-Ladd Foundation

\$2,500-\$9,999

Aida T. Levitan
Borinquen Health Care Center
Eduardo and Liliam Del Riego Foundation, Inc.
Green Family Foundation Trust
One Sotheby's International Realty
PNC Financial Services Group, Inc.
Gamaliel R. Herrera
Sean Parker Foundation
Reza Shadravan

\$1,000-2,499

Gentle Barnett
BNY Mellon Wealth Management
Katherine Caskey
City National Bank
Carlos J. Dominguez
Maria "Cookie" Gazitua
Marilyn Greene
Deborah Korge
Francelot Moise
Daniel G. Perron
Betty Laird Perry

Artwork Donors

Jack Amoroso
David Castillo and Pepe Mar
F. Hawryliw
Richard Levine
Alfred Allan Lewis
Liza and Dr. Arturo F. Mosquera
Richard A. Schwartz, Professor Emeritus
Donald and Alison Weiss

Gifts in Kind

Bacardi
Beat Culture Brewery & Kitchen
Cerveceria La Tropical
Crumb! Cookies
InterContinental Doral Hotel
Island TV
Josh Cellars Wine
specialTEA Lounge & Café

Endowments

Art Museum Program Endowment
Ralph L. and Alfred Allan L. Endowment
Dorothea & Steven Green Program Endowment
Helena Venero Endowment
Jane Hsiao Asian Art Endowment
Latin Am. & Caribbean Program Endowment
Sanford and Dolores Ziff and Family Endowment



THE MUSEUM TEAM

STAFF

Jordana Pomeroy, PhD, Director
 Emily Afre, Grants Administrator
 Esteban Asencio, Office Specialist
 Christian Bonet, Assistant Registrar
 Carmen Carpio, Membership & Visitor Services Manager
 Amaris Cruz-Guerrero, Museum Educator
 Atria de la Cruz Montejo, Manager of Administrative Services
 JeanCarlos Fernandez, Marketing and Communications
 Amy Galpin, PhD, Chief Curator
 Ana Guerra, Visitor Services & Events Coordinator

Miriam Machado, Curator of Education
 Antonio Martinez, Custodian
 Kevin McGary, Senior Preparator
 Marla Mitjans, Security Guard
 Eiling Nodarse, Security Guard
 Lourdes Ranero, Chief Registrar
 Yady Rivero, Assistant Curator
 Luis Tabares, Security and Building Manager
 Daniel Zayas, PR & Marketing Manager

ADVISORY COUNCIL

Daniel Perron, Chair
 Tori Arpad-Cotta
 Elizabeth Béjar, PhD (ex officio)
 Katherine Caskey
 David Chang
 Nicki Fraser, PhD
 Thomas Fuchs
 Maria "Cookie" Gazitua
 Marilyn Green
 Deborah D. Korge
 Rodrigo Nieto-Galvis
 Maria Prorok
 Gerardo "Jerry" Rodriguez
 Karen Vassell
 Diego Waisman
 Douglas Wartzok, PhD, Provost Emeritus, FIU

STUDENT EMPLOYEES, INTERNS, AND VOLUNTEERS

Kevin Abascal
 Anissa Angol '22
 Jocelyn Arismendi '22
 Camila Atencio
 Franco Batista Garcia '23
 Keoni Bradley
 Cree Butler '23
 Xochitl Caliz
 Angela Chaine '23
 Esther Estime '22
 Daniel Fuenmayor '23
 Miriam "Maggie" Acacia Gamson '25, UCF
 Yaatia Graham '22
 Troi Jackson '23
 Lovedine Jean-Gilles
 Adrianna Leal '25

Madeline Martinez '24
 Jasmine McCobb Pratt '22
 Gisselle Mestre Delgado '24
 Christopher Montejo '24
 L'nique Noel '21, '24
 Margaret Pizzi '26, GWU
 Cassandra Quevedo
 Paulina Rodriguez
 Paola Ruran
 Skyliz Sanchez '22
 Sasha Satulovsky '25
 Ricardynn St Thomas '22
 Valeria Ulloa '22
 Lucas Viera '23
 Giovanni Viera
 Amanda Vargas '25